

Project 24/03/2025, 21:22

Monday 24 March 2025

Prepared For Saltash Council

12 Pages Identified



Phase 1 for the Saltash Jubilee Pontoon:

Assigned To VOYAGER MARINE

Here is a summarized list of the work completed during Phase 1 for the Saltash Jubilee Pontoon:



Phase 1

Assigned To Voyager Marine

Phase 1 Works Overview

1. Secure Hammerhead Pontoon:

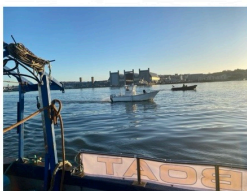
Attached the hammerhead pontoon to the main pontoon using heavy chains and shackles to prevent the pontoons from breaking free



2. Deployment of Towboat/Safety Boat

Assigned To Voyage Marine

2. Deployment of Towboat/Safety Boat: Supplied and deployed necessary towboat(s) and safety boat along with a suitable labor force.





3. Detach and Tow Finger Pontoons 4. Isolate Pontoon Services

Assigned To Voyager Marine

3. Detach and Tow Finger Pontoons: Detached each finger pontoon and towed them to Voyager Boatyard.

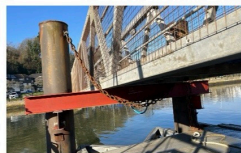
4. Isolate Pontoon Services: Isolated services connected to the pontoon system.



5. Detach Hammerhead Pontoon

Assigned To Voyager Marine

5. Detach Hammerhead Pontoon: Split down the hammerhead pontoon and towed it to Voyager Boatyard.



6. Install Support Structures 7. Install Safety Chains

Assigned To Voyager Marine

6. Install Support Structures: Attached support brackets and a steel RSJ Girder to walkway piles and positioned the gangway on the RSJ Girder using tidal lift.

7. Install Safety Chains: Fitted safety chains to secure the gangway to the piles for enhanced safety.



8. Navigation Lighting 9. Detach and Tow Main Pontoon

Assigned To Voyager Marine

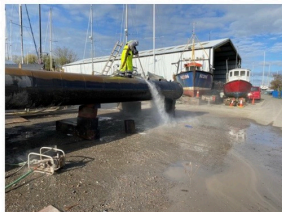
8 Remove navigation lighting from main pontoon and re secure them onto the exposed piles.

9. Detach and Tow Main Pontoon: Detached the main pontoon and towed it to Voyager Boatyard.



10. Lift Pontoon Systems

10. Lift Pontoon Systems: Used a boat travel hoist to lift each pontoon system and placed them on the slip.



11. Clean Pontoon Systems

Assigned To Voyage Marine

11. Clean Pontoon Systems: Scraped and power washed the pontoon systems and steel floats.



12. Remove Deck and Substructure

12. Remove Deck and Substructure: Removed the deck and substructure from the main floats.



13. Survey -14. Phase 2- 15. NDT Test

Assigned To Voyager Marine

13. Conduct Full Survey: Performed a survey of the steel work, including Ultrasonic Thickness Measurements (UTMs) of the steel floats and Non-Destructive Testing (NDT) of connection points.

14. Prepare Phase 2 Quotation: Produced a report and quotation for Phase 2 works focused on repairs and refurbishment of the pontoon system.

15. NDT Testing: Conducted NDT testing of five piles and pressure testing of the floats.

Phase 1 Works Overview

Assigned To Voyager Marine

Here is a summarized list of the work completed during Phase 1 for the Saltash Jubilee Pontoon:

Phase 1 Works Overview

1. Secure Hammerhead Pontoon:

Attached the hammerhead pontoon to the main pontoon using heavy chains and shackles to prevent the pontoons from breaking free

2. Deployment of Towboat/Safety Boat: Supplied and deployed necessary towboat(s) and safety boat along with a suitable labor force.

3. Detach and Tow Finger pontoons: Detached each finger pontoon and towed them to Voyager Boatyard.
4. Isolate Pontoon Services: Isolated services connected to the pontoon system.
5. Detach Hammerhead Pontoon: Split down the hammerhead pontoon and towed it to Voyager Boatyard.
6. Install Support Structures: Attached support brackets and a steel RSJ Girder to walkway piles and positioned the gangway on the RSJ Girder using tidal lift.
7. Install Safety Chains: Fitted safety chains to secure the gangway to the piles for enhanced safety.
8. Remove navigation lighting from main pontoon and re secure them onto the exposed piles.
9. Detach and Tow Main Pontoon: Detached the main pontoon and towed it to Voyager Boatyard.
10. Lift Pontoon Systems: Used a boat travel hoist to lift each pontoon system and placed them on the slip.
11. Clean Pontoon Systems: Scraped and power washed the pontoon systems and steel floats.
12. Remove Deck and Substructure: Removed the deck and substructure from the main floats.
13. Conduct Full Survey: Performed a survey of the steel work, including Ultrasonic Thickness Measurements (UTMs) of the steel floats and Non-Destructive Testing (NDT) of connection points.
14. Prepare Phase 2 Quotation: Produced a report and quotation for Phase 2 works focused on repairs and refurbishment of the pontoon system.
15. NDT Testing: Conducted NDT testing of five piles and pressure testing of the floats.

This list outlines the actions taken to address the current situation and prepare for the next phase of the project.

Sid Currie
Oceanic Marine Group